

MLS Area SWE

Listings	This Month			Year-to-Date		
	Oct 2021	Oct 2020	Change	2021	2020	Change
Single Family Sales	71	85	-16.5%	711	814	-12.7%
Condo/TH Sales	3	2	+50.0%	44	48	-8.3%
Total Sales	74	87	-14.9%	755	862	-12.4%
New Homes Only	1	--	--	19	21	-9.5%
Resale Only	73	87	-16.1%	736	841	-12.5%
Sales Volume	\$38,657,399	\$37,701,671	+2.5%	\$427,526,022	\$343,316,580	+24.5%
New Listings	82	89	-7.9%	944	856	+10.3%
Pending	--	--	--	--	--	--
Withdrawn	3	3	--	9	16	-43.8%
Expired	3	3	--	9	16	-43.8%
Months of Inventory	1.1	0.4	+168.7%	N/A	N/A	--

Average	This Month			Year-to-Date		
	Oct 2021	Oct 2020	Change	2021	2020	Change
List Price	\$522,091	\$426,121	+22.5%	\$527,956	\$396,353	+33.2%
List Price/SqFt	\$271	\$188	+44.5%	\$249	\$183	+36.1%
Sold Price	\$522,397	\$433,353	+20.5%	\$566,260	\$398,279	+42.2%
Sold Price/SqFt	\$271	\$191	+42.1%	\$267	\$184	+45.3%
Sold Price / Orig LP	100.1%	101.5%	-1.4%	107.8%	100.5%	+7.2%
Days on Market	20	23	-13.3%	10	32	-67.8%

Median	This Month			Year-to-Date		
	Oct 2021	Oct 2020	Change	2021	2020	Change
List Price	\$480,000	\$400,000	+20.0%	\$475,000	\$366,170	+29.7%
List Price/SqFt	\$258	\$184	+40.3%	\$244	\$180	+35.8%
Sold Price	\$478,250	\$416,890	+14.7%	\$500,000	\$365,000	+37.0%
Sold Price/SqFt	\$258	\$186	+38.5%	\$264	\$180	+46.6%
Sold Price / Orig LP	100.0%	100.0%	+0.0%	105.1%	100.0%	+5.1%
Days on Market	12	5	+130.0%	5	7	-28.6%

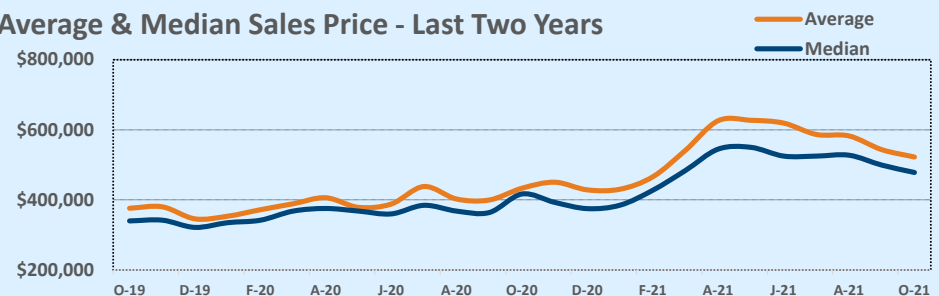
Residential Statistics

Independence Title

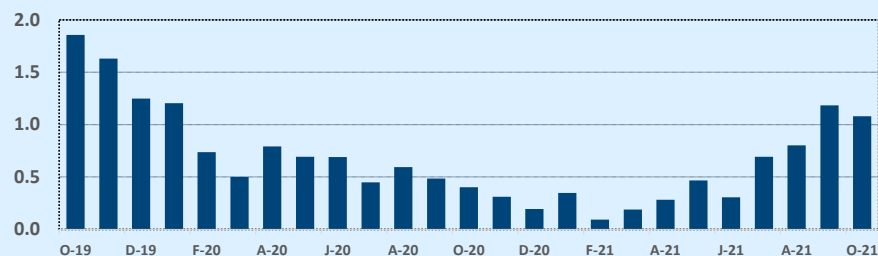
October 2021

Price Range	This Month			Year-to-Date		
	New	Sales	DOM	New	Sales	DOM
\$149,999 or under	--	--	--	--	--	--
\$150,000- \$199,999	--	--	--	1	1	16
\$200,000- \$249,999	--	1	15	1	1	15
\$250,000- \$299,999	--	--	--	14	6	3
\$300,000- \$349,999	4	1	9	52	23	9
\$350,000- \$399,999	8	8	22	110	82	13
\$400,000- \$449,999	11	11	18	132	110	11
\$450,000- \$499,999	18	22	18	200	143	10
\$500,000- \$549,999	14	12	24	113	90	9
\$550,000- \$599,999	7	2	4	85	69	9
\$600,000- \$699,999	8	6	34	94	90	11
\$700,000- \$799,999	6	8	20	67	57	12
\$800,000- \$899,999	3	--	--	30	41	8
\$900,000- \$999,999	3	2	6	21	19	7
\$1M - \$1.99M	--	1	6	20	20	8
\$2M - \$2.99M	--	--	--	3	2	7
\$3M+	--	--	--	1	1	110
Totals	82	74	20	944	755	10

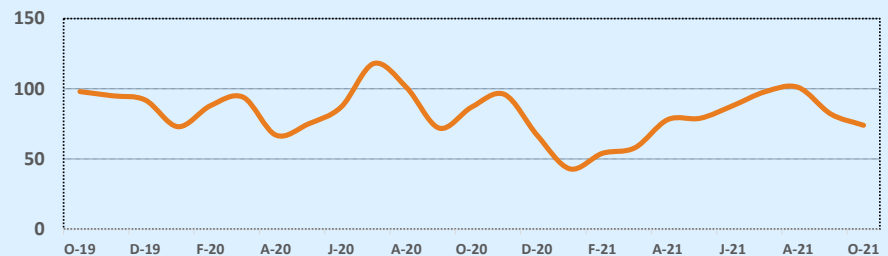
Average & Median Sales Price - Last Two Years



Months of Inventory - Last Two Years



Number of Sales - Last Two Years



Based on information from the Austin Board of REALTORS® (alternatively, from ACTRIS). Neither the Board nor ACTRIS guarantees or is in any way responsible for its accuracy. The Austin Board of REALTORS®, ACTRIS and their affiliates provide the MLS and all content therein "AS IS" and without any warranty, express or implied. Data maintained by the Board or ACTRIS may not reflect all real estate activity in the market.